

PRODUCT GUIDE



Anti-Bacterial
Anti-Virus

The clean trigger has
an anti-virus and
Anti-bacterial effect.



Eliminates clogging in piping



Clean the toilet just by hanging



Just put it in a vase to make
cut flowers last longer



Keep a fountain clean
at all times



Eco-friendly products do
not use chemicals
CLEAN TRIGGER
PAT.P



Keep your washing machine clean



Cleaning of industrial cooling towers
in combination with filter-mechanism.
It is possible to remove scale,
prevent algae generation,
and suppress slime generation.



Improving the water quality of the mist shower
and eliminating the clogging of the nozzle
with antibacterial action

★CLEAN TRIGGER(Magnetophoresis device)

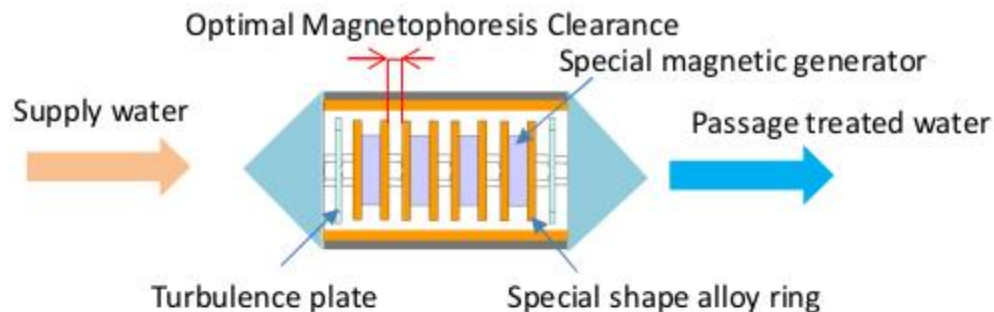
● Clean Trigger overview and structure *PAT.P*

The clean trigger is an epoch-making device in which a powerful special magnetic device and a ring of special shape alloy that generates turbulence are arranged in the casing. By passing tap water, groundwater, etc., various effects can be expected due to the synergistic effect of magnetism and special shape alloy.

1. Due to the antibacterial properties and ionization tendency of the special alloy ions, it removes dirt adhering to pottery and resin. It also prevents the generation of algae.
2. The synergistic effect of magnetism and ions prevents corrosion in the pipe and scales. Prevents the generation of rust.
3. Since it brings various effects without using chemicals, It is a clean device that does not affect the environment, which is becoming a problem in the world.

The effect of the clean trigger is the sudden change like when using chemicals. It does not appear, but it will appear in a clear form over time (relatively short time). These effects have been confirmed by numerous empirical examples of our company as well as theoretical elucidation.

• Basic structure of the CLEAN TRIGGER



● Features of Clean Trigger

- * Keep costs low
 - Easy to install
 - Low running cost
 - Used for a long time
- * Highly safe
 - Pollution-free and safe
 - No chemicals required
 - Water quality is stabilized

*Smart ecology without using chemicals

*Infinitely expanding technology, industrial / social needs

● Effects of Clean Trigger and representative examples

1. Example of removing dirt from pottery (toilet bowl, etc.) and resin products

- In the toilet water tank



Clean Trigger
Before use



Clean Trigger
30 days after use

- Urinal drainage condition



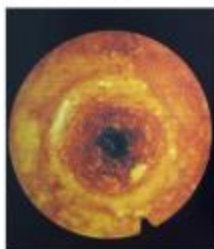
Clean Trigger
Before use



Clean Trigger
30 days after use

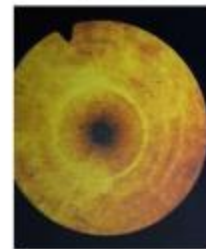
2. Example of prevention and removal of rust and scale in piping

It has already been proven in various places and has a track record that the effect of magnetism can provide anti-rust and anti-rust effects on galvanized steel pipes. By combining magnetism and special alloys, equipment with various scale removal capabilities has been developed. It is a Clean Trigger.



Condition inside piping
Clean Trigger Before use

Galvanized
steel pipe



Condition inside piping
Clean Trigger 60 days after use

3. Other effect examples

1) The scale of the cooling tower for cooling is removed by the force of ions and magnetic force, and the generation of slime and algae is suppressed by the antibacterial effect of ions. These effects are very effective in preventing clogging of fountains and mist devices.

• Condenser tube for closed cooling tower



Clean Trigger Before use



Clean Trigger 60 days after use



No algae is generated in the water that has been supplied with the Clean Trigger.

(Comparison 30 days after the clean trigger is input)

2) Exhibits various effects due to the antibacterial effect of ions.

☆ The life of cut flowers can be greatly extended.



Clean trigger before use Cut flowers in vase (after 7 days)

☆ Removes slimes, stains and scales to prevent bacteria inside the washing tub.



Clean trigger before use Clean trigger used
The lint collection part (made of resin) inside the washing tub (after 10 days)

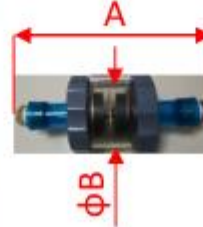
● Clean Trigger model

Stationary CT type



| Model No. | A (mm) | B (mm) | Weight (Kg) |
|-----------|--------|--------|-------------|
| CT-1 | 95 | 35 | 0.1 |
| CT-2 | 135 | 35 | 0.18 |
| CT-3 | 90 | 70 | 0.66 |
| CT-4 | 337 | 104 | 2.5 |

Mounting CTS type



| Model No. | A (mm) | B (mm) | Weight (Kg) |
|-----------|--------|--------|-------------|
| CTS-1 | 95 | 35 | 0.14 |
| CTS-2 | 160 | 35 | 0.26 |
| CTS-3 | 220 | 90 | 0.84 |
| CTS-4 | 220 | 160 | 12.0 |

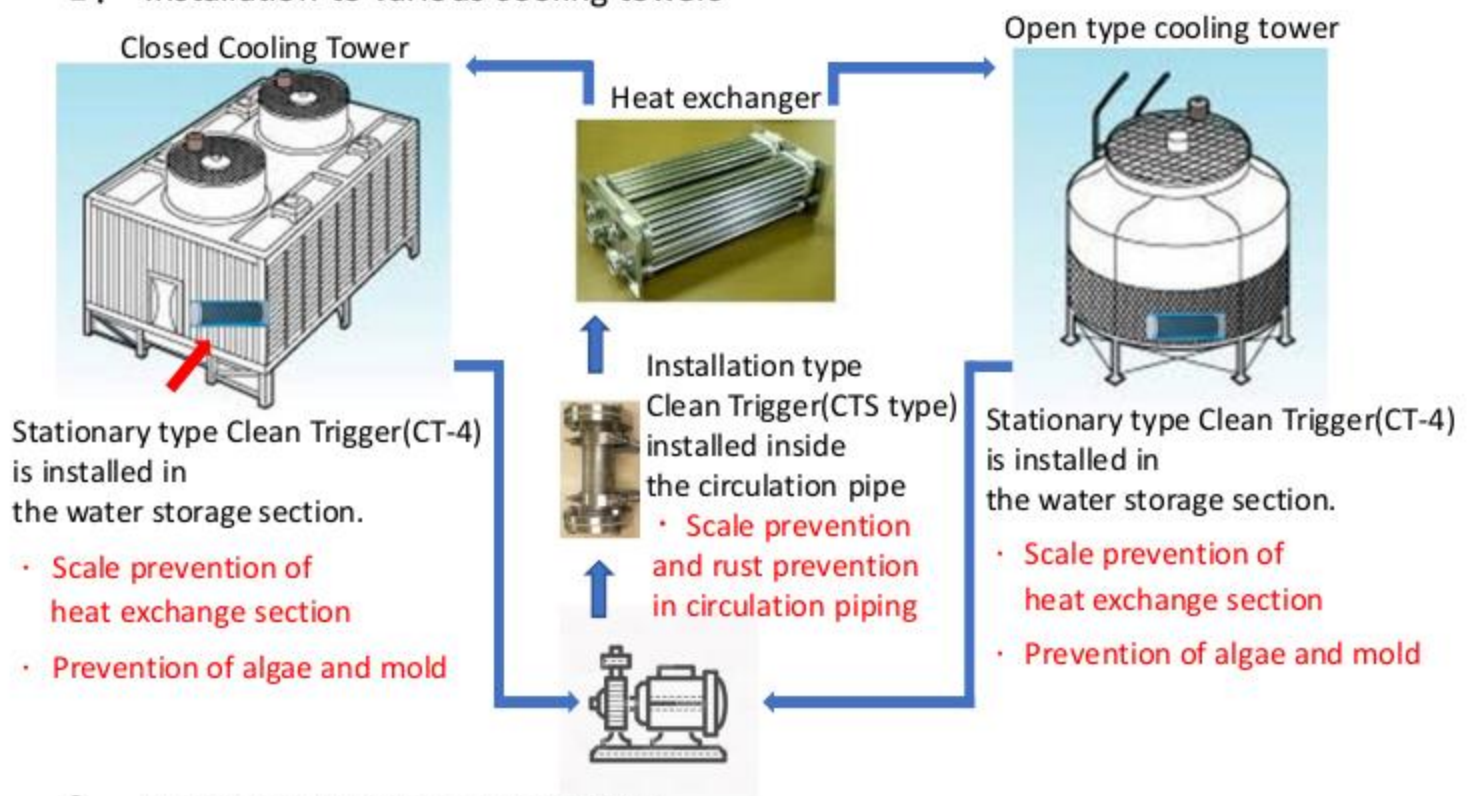
In addition to the above, upon request, we will manufacture a Clean Trigger that matches the pipe diameter of the system.

* Features of the Clean Trigger for industry

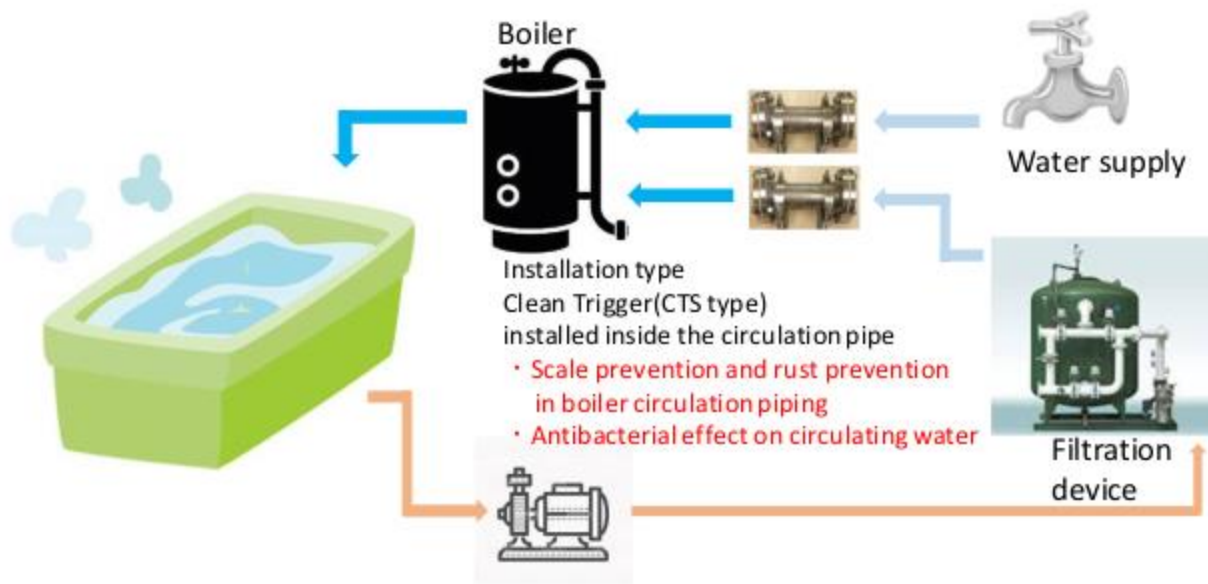
1. Prevention of scale adhering to various heat exchange parts
2. Prevents the generation of algae and mold in various cooling towers
3. Rust prevention and scale prevention in circulation piping
4. Antibacterial and antiviral effect on circulating water
5. High cost performance (cost effectiveness)

*the Clean trigger installation example

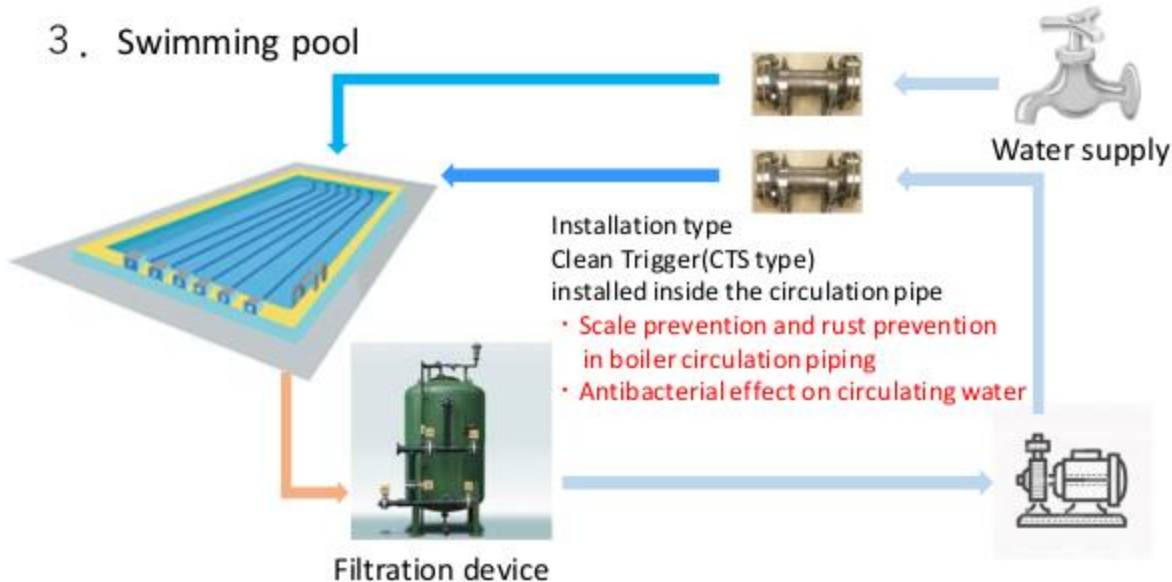
1. Installation to various cooling towers



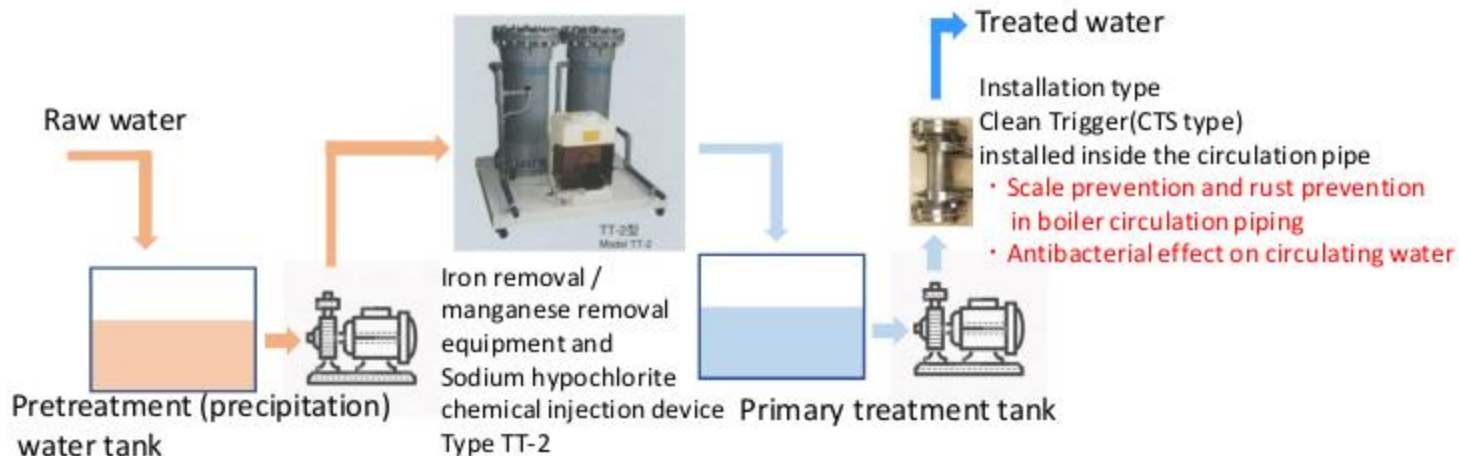
2. Hot water facilities such as baths



3. Swimming pool



4. Groundwater (water containing a lot of iron and manganese)



5. Small type steam boiler

